

# Cleo LexiCom Integration with Inovis' TrustedLink for Windows

Streamline your EDI Communications with an Integrated Solution from Cleo

The integration of Cleo LexiCom and TrustedLink for Windows offers a streamlined EDI communication process that is both functional and flexible.

An integrated solution requires no significant change to existing processes. Instead of two separate programs running independently of one another, TrustedLink controls both file creation and transfer.

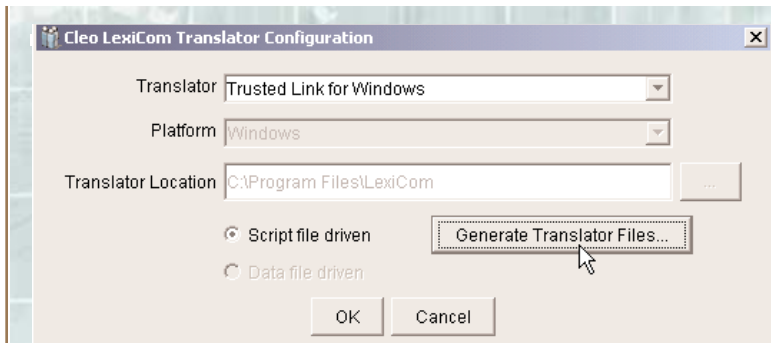
Since functions take place within the familiar TrustedLink interface, the EDI operator can add LexiCom's file transfer capabilities seamlessly, without having to relearn any EDI procedures. Thus, operator re-training time is minimized or even eliminated.

## HOW IT WORKS

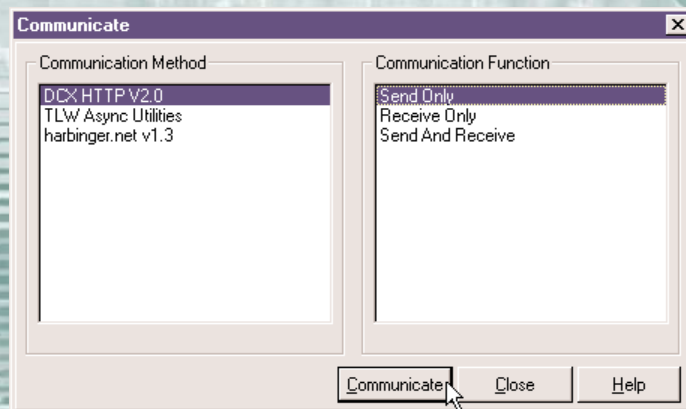
Within LexiCom, the user generates TrustedLink (TLW) Log-on scripts using the "Translator Configuration" feature, as shown in the screen shot (right, top). Scripts can be generated for each trading partner. Then, within TrustedLink, the user merges the Log-on with the corresponding partner.

This configuration allows LexiCom to run transparent to the TrustedLink user. Within TrustedLink, the user communicates with trading partners by selecting the appropriate communication method (TLW Log-on) and function, as shown in the screen shot (right, bottom).

A Quick Start Guide is provided with the LexiCom



Above: A user can generate TrustedLink for Windows Log-On scripts via the "Translator Configuration" feature within LexiCom.



Above: In TrustedLink, the user communicates with trading partners by selecting the TLW Log-on and function.

## More About Cleo LexiCom

Cleo LexiCom lets companies securely transfer e-business documents to and from trading partners over the Internet and other specialized TCP/IP networks.

It supports the AS2 standard as well as the major Internet communications protocols FTP, FTP/S, HTTP, and HTTP/S. Pre-loaded configurations are available for major servers and value-added networks (VANs), helping users get up and running quickly and achieve a quick return on investment.

Additionally, Cleo LexiCom is integrated with the major EDI software packages. This eliminates operator re-training and allows LexiCom to function seamlessly with other business applications. The software runs on Windows, Unix, Linux and AS400.

TrustedLink Integration package that allows users to get up and running in minutes. As always, Cleo support is available to assist with any questions that occur during the installation or setup, to insure the transition goes smoothly.

To order or inquire further about Cleo LexiCom with TrustedLink Integration, call Cleo Sales today.

## CLEO COMMUNICATIONS

4203 GALLERIA DRIVE  
ROCKFORD, ILLINOIS 61111  
PHONE: 815.654.8110  
FAX: 815.654.8294

180 LITTLE LAKE DRIVE  
ANN ARBOR, MICHIGAN 48103  
PHONE: 734.913.6950  
FAX: 734.913.8125

1.800.233.CLEO  
WWW.CLEO.COM

