

Cleo LexiCom Integration with Sterling Gentran:Director

Streamline your EDI Communications with an Integrated Solution from Cleo

The integration of Cleo LexiCom and Gentran:Director offers a streamlined EDI communication process that is functional and flexible.

An integrated solution requires no significant change to existing processes. Instead of two separate programs running independently of one another, Gentran controls both file creation and transfer.

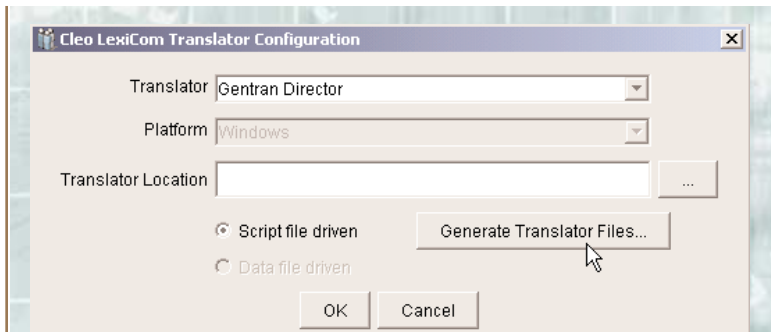
Since functions take place within the familiar Gentran interface, the EDI operator can add LexiCom's file transfer capabilities seamlessly, without having to relearn any EDI procedures. Thus, operator re-training time is minimized or even eliminated.

HOW IT WORKS

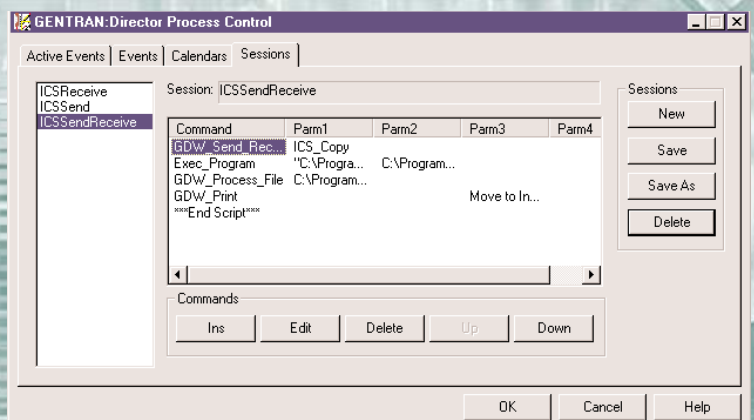
Within LexiCom, the user generates Gentran:Director scripts using the "Translator Configuration" feature, as shown in the screen shot (right, top). Scripts (Gentran Session Files) can be generated for each trading partner.

This configuration allows LexiCom to run transparent to the Gentran user. Within Gentran, users communicate with trading partners by scheduling or manually invoking the appropriate communication session as shown in the screen shot (right, bottom).

A Quick Start Guide is provided with the LexiCom Gentran:Director Integration package that allows users to get up and running in min-



Above: A user can generate Gentran:Director scripts via the "Translator Configuration" feature within LexiCom.



Above: In Gentran, users communicate with trading partners by scheduling or manually invoking the appropriate communication session.

More About Cleo LexiCom

Cleo LexiCom lets companies securely transfer e-business documents to and from trading partners over the Internet and other specialized TCP/IP networks.

It supports the AS2 standard as well as the major Internet communications protocols FTP, FTP/S, HTTP, and HTTP/S. Pre-loaded configurations are available for major servers and value-added networks (VANs), helping users get up and running quickly and achieve a quick return on investment.

Additionally, Cleo LexiCom is integrated with the major EDI software packages. This eliminates operator re-training and allows LexiCom to function seamlessly with other business applications. The software runs on Windows, Unix, Linux and AS400.

utes. As always, Cleo support is available to assist with any questions that occur during the installation or setup, to insure the transition goes smoothly.

To order or inquire further about Cleo LexiCom with Gentran:Director Integration, call Cleo Sales today.

CLEO COMMUNICATIONS

4203 GALLERIA DRIVE
ROCKFORD, ILLINOIS 61111
PHONE. 815.654.8110
FAX. 815.654.8294

180 LITTLE LAKE DRIVE
ANN ARBOR, MICHIGAN 48103
PHONE. 734.913.6950
FAX. 734.913.8125

1.800.233.CLEO
WWW.CLEO.COM

CLEO